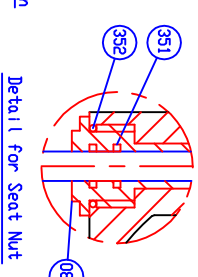
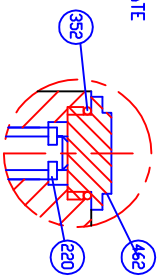
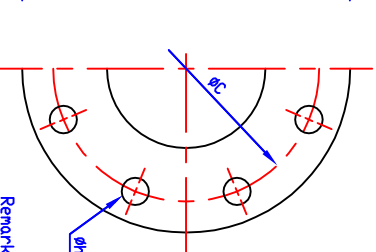
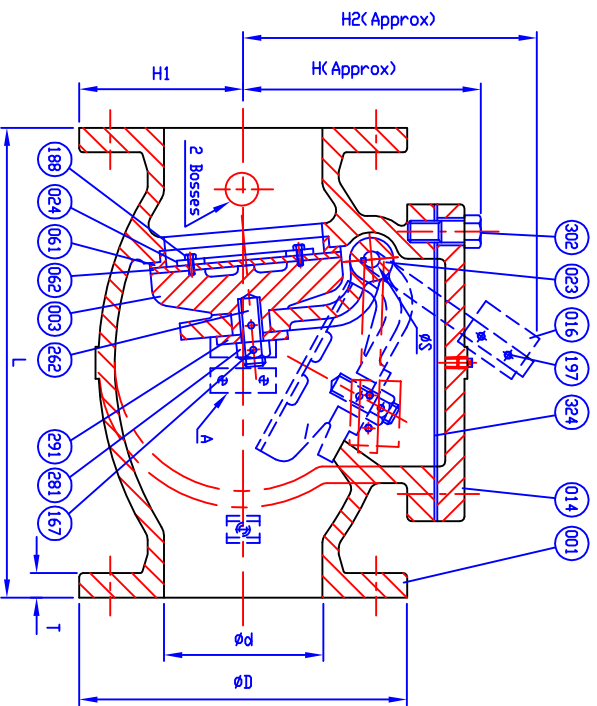


VALVE SIZE	PLUG SIZE
2	1/2
2 1/2	1/2
3	1/2
4	1/2
6	3/4
8	3/4
10	1
12	1

MARKING

SIZE (INCH)
 CONE
 200 CMP
 ANMA C508
 SERIES 8000
 YEAR
 SCI
 PURING DATE



Remark - Part No. 024 (Seat Holder)
 - size 2'-6" => Cast Iron
 - size 8'-12" => Ductile Iron

SIZE Ød in. mm.	L	ANSI B16.1 CL.125					ØS	H	H1	H2	I	J	K	M	N	O	P	L1	L2
		ØD	ØC	Øh	n	T													
2 (50)	8	6	4 3/4	3/4	4	5/8	3/8	4 15/16	3	7 1/2	7/16	7/8	1 11/16	—	3/8	5/8	2 13/16		
2 1/2 (65)	8 1/2	7	5 1/2	3/4	4	11/16	3/8	5 11/16	3 1/2	8 1/8	7/16	7/8	1 11/16	—	3/8	5/8	2 3/16		
3 (80)	9 1/2	7 1/2	6	3/4	4	3/4	1/2	6 1/16	3 3/4	9 1/4	3/4	1 1/2	3	2 1/2	3/4	6 5/16	4 1/16		
4 (100)	11 1/2	9	7 1/2	3/4	8	15/16	1/2	6 7/8	4 1/2	11 3/16	3/4	1 1/2	3	2 1/2	3/4	7 1/8	4 15/16		
6 (150)	14	11	9 1/2	7/8	8	1	3/4	8 1/2	5 1/2	14 3/8	3/4	1 1/2	3	2 1/2	3/4	8 11/16	5 15/16		
8 (200)	19 1/2	13 1/2	11 3/4	7/8	8	1 1/8	7/8	9 5/16	6 3/4	17 3/8	7/8	1 3/4	3 1/2	3 1/4	5/8	10 7/8	8 1/16		
10 (250)	24 1/2	16	14 1/4	1	12	1 3/16	1	11 3/16	8	21 1/2	7/8	1 3/4	3 1/2	3 1/4	1 1/4	12 1/4	9 3/16		
12 (300)	27 1/2	19	17	1	12	1 1/4	1 1/8	13 9/16	9 1/2	24 1/16	7/8	1 3/4	3 1/2	3 1/4	1 1/4	14 3/8	10 13/16		

462	Retaining Plug	Brass	B 21		1
352	D-Ring C	Rubber (Buna N)	D 2000 BK 707		2
351	D-Ring B	Rubber (Buna N)	D 2000 BK 707		2
324	Gasket	Rubber (Buna N)	D 2000 BK 807		1
302	Cover Bolt	Zinc Coated Steel	A 307 Grade B		1set
291	Washer	Brass	B 21		1
287	Spacer	Brass	B 21		2
281	Disc Nut	Brass	B 21		1
262	Disc Stud	Brass	B 21		1
220	Snap Ring	Stainless Steel			1
197	Weight Bolt & Nut	Zinc Coated Steel	A 307 Grade B		2
188	Disc Seat Bolt	Stainless Steel	A 276 Type 304		1set
167	Pin	Stainless Steel	A 276 Type 304		2
166	Plug	Malleable Iron	A 47		1
161	Key	Stainless Steel	A 276 Type 304		1
159	Hinge Pin	Stainless Steel	A 276 Type 304		1
155	Weight Arm	Ductile Iron	A 536 Gr. 65-45-12		1
154	Bolt & Nut	Zinc Coated Steel	A 307 Grade B		2
088	Seat Nut	Brass	B 21		1
062	Disc Seat Ring	Rubber (Buna N)	D 2000 BK 807		1
061	Body Seat Ring	Brass	B 62		1
024	Seat Holder	See Remark			1
023	Arm	Ductile Iron	A 536 Gr. 65-45-12		1
016	Weight	Cast Iron	A 126 Class B		1
014	Cover	Cast Iron	A 126 Class B		1
003	Disc	Cast Iron	A 126 Class B		1
001	Body	Cast Iron	A 126 Class B		1
N/L	PARTS	MATERIAL	ASTM DESIGNATION	Q'TY	
HYDRD SHELL		400		PSI.	
HYDRD VALVE SEAT		200		PSI.	
HYDRD BACK SEAT		—		PSI.	
AIR SEAT		—		PSI.	
STEAM		—		PSI.	
WORKING PRESSURE		200		PSI.	
TEST PRESSURE		—		PSI.	

MILLIKEN - CCNE

2625 BROOKHEAD RD. BETHLEHEM, PA. 18020
 PHONE: 610-861-8803, FAX: 610-861-8994

SCALE: N.T.S. DR. JON COLPANI DATE 10/20/10 REF. DWG. USA1361D
 CHK. APP. ECN.

SIZE 2" TO 12" SWING CHECK VALVE ANMA C508
 BRONZE BODY SEAT RING & BUNA N DISC SEAT RING
 WITH ONE LEVER AND WEIGHT

TYPE: 8001AB1LW DWG NO. S80001 REV.